

AUGUST 2023

# BISHOP TRIBAL NEWSLETTER

*Official Newsletter of the Bishop Paiute Tribe*

## Back to School Time

BY DESTON ROGERS

***School begins on August 17th. School starting can be both a fun time and, let's admit it, not so fun. But here are some tips to prepare for the first day of school.***

- ***A few weeks before school starts, get your child into the habit of going to bed earlier.***
- ***Re-establish a consistent routine***
- ***Choose the right backpack. Backpacks that are too heavy or worn improperly could result in muscle strain, headaches, and neck pain.***
- ***Talk about safety***
- ***Establish healthy habits including food, physical activities and consistent meal times***
- ***Limit screen times. Back to school is the perfect opportunity to re-establish screen time limits. Use an alarm clock instead of a cellphone to wake up in the mornings.***
- ***Talk about first-week jitters. Reassure your child that being nervous is natural – even for teachers.***

***Celebrate the start of a new school year. If you celebrate the first day of school, your kids will see back-to-school as a transition they can really enjoy. Try a back-to-school party the day before school starts.***

## In This issue:

Bishop Unified School District  
2023-2024 School Calendar

Council Meets with US Senate  
Candidate Adam Schiff

Coyote Mountain Solar Project  
Ribbon Cutting

Scam Alert-Bishop Tribal  
Police

Public Works Welcomes  
New Staff Member

Family Formation Project  
News

Cultural Center News

2022 Annual Water Quality  
Report

And, a whole lot more!





## ANNOUNCEMENTS, EVENTS & UPDATES

### *Regular Tribal Council Meetings:*

- *August 10th 5:30pm*
- *August 24th 5:30pm*

### *Tribal Court:*

*August 16th - 9:30am*

### *Bishop Tribal Youth Council Meetings:*

- *August 13th - 4pm*
  - *August 20th - 4pm*
- (Bishop Indian Education Center)*

### *First Day of School:*

*Thursday, August 17th*

### *Voters Distribution: Tribal Chambers*

*August 11th - 7am to 5pm*

## GENERAL COUNCIL MEETING:

*September 16th, 2023*

*\*9am at the Bishop Indian Head Start, Community Center.*

*If you have an area of concern, or issue you would like the Tribal Council to address, please contact Charlene Keller, Tribal Council Secretary by emailing: [charlene.keller@bishoppaiute.org](mailto:charlene.keller@bishoppaiute.org) or call 760-873-3584 ext. 1200*

## ***Bishop Tribal Council Regular Meetings - July Action Report***

***Submitted by Steven Orihuela BITC Secretary/Treasurer***

### ***Regular Tribal Council Meeting 7.15.2023***

- Tribal Council introduced the new Tribal Police Chief, Raymond Allen, who gave a brief overview of this law enforcement background, and he is looking forward to serving the Bishop Paiute Tribal Community.
- Tribal Council approved five (5) enrollment applications. There are a total of 2,206 enrolled tribal members. There are eighty-two (82) applications pending.
- Tribal Council tabled Tribal Resolutions T2023-034 and T2023-035 until further review and discussion.
- Tribal Council approved paying off the existing Umpqua Casino loan in the amount of \$10,599,573.25.
- Tribal Council approved the Memorandum of Agreement between the Bishop Paiute Tribe and Morongo Band of Mission Indians for Disaster and Emergency Mutual Aid.
- Sandra Warlie, Public Works Director, gave an overview of the proposed roads on the Bishop Paiute Reservation.
- Travis Nabahe, BPDC Director, gave an overview of the EDA grant closeout, cigarette sales & prevention activities.
- Brian Poncho, COOI, gave updates on the following items:
  - National Park Service Master Cooperative Agreement – discussed the funding directly to tribes instead of contractors for cultural monitors.
  - Olanha Cartago Project – project is currently on hold pending renegotiation of a new plan.
- **Public Comment**
  - Mrs. Spoonhunter relayed concerns about the land assignment resolutions for minors.
  - Mr. Stone commented about the Election Ordinance and the voter's registration.
  - Mr. Bernard commented on a land assignment, the conditions of the house, and if the house can be demolished.

# *Tribal Council Meets with US Senate Candidate Adam Schiff*



On Tuesday, July 11, 2023, the Bishop Tribal Council met with US Senate Candidate Adam Schiff, via Zoom. Adam Schiff is running for the Senate Seat currently held by Senator Diane Feinstein, who is retiring at the end of her term.

Topics during the Zoom meeting included the upcoming campaign, ICWA, Cal-Trans and Public Law 280.



*(Photos Credit:  
Brian Poncho)*



# Come Celebrate California's "First" Tribal Multifamily Solar Installation

*On Wednesday, August 9th, 2023, the Bishop Paiute Tribe will be recognized with a Ribbon Cutting Ceremony, as California's First Tribal Multifamily Solar Installation. The event will take place at the Coyote Mountain Apartments, starting at 10am.*

*The 49-kW DC System at the Coyote Mountain Apartments is the first "completed" Solar On Multifamily Affordable Housing (SOMAH) project, within a tribal reservation and will provide direct economic benefits to residents via energy bill credits.*

*The project received permits to begin on December 2021 and received permission to operate from electrical utility SCE on March 2023.*

*Along with the Bishop Tribal Council (Tribal Council), representatives from Grid Alternatives and SOMAH will be on hand for the Ribbon Cutting Ceremony. Invited guests include Owens Valley Indian Water Commission, Southern California Edison, Los Angeles Department of Water and Power, Toiyabe Indian Health Project, Bishop Area Chamber of Commerce, Inyo County, State and Federal Representatives.*

*The Tribal Council, on behalf of the Bishop Tribal Community, is honored with the Ribbon Cutting Ceremony and recognition, saying "we are proud of the efforts of the Bishop Paiute Tribe's Environmental Management Office (EMO), our EMO Director Brian Adkins and Housing Director Rena Tibbets, for spearheading this endeavor. The Tribe continuously looks for improvements that benefit our tribal members and the community. This project took a lot of planning and execution, and we hope other Tribal communities can look to us as an inspiration to bring the same to their communities. We don't want to take the credit for this amazing achievement. That credit belongs to all of those involved from start to finish, who made this project come to fruition."*

*Both tribal and non-tribal communities are welcome to attend the Ribbon Cutting Ceremony, on Wednesday, August 9th from 10am to 11:30am, at the Coyote Mountain Apartments, 18 N. Pa Ha Lane, in Bishop.*





*From the Office of Tribal Police Chief Raymond Allen:*

## SCAM ALERT

This really is any call or text that refer to a costly membership fee or an issue with your membership, but specifically with Amazon Prime. The caller will ask you to confirm or cancel the charge. These scammers try to convince you to provide payment or bank account information in order to reinstate a membership.

Amazon will never ask you to provide payment information for products or services over the phone. Visit the Message Center on Amazon.com or on their app to review authentic emails from Amazon. To verify your Prime Membership status or make payments, log into your Amazon account and go to Your Account.

This goes with other scams involving other companies and the caller identifies themselves to be an employee of Best Buy, Walmart, U.S. Government, Sheriff’s Department, or local police department. If in doubt about any suspicious calls or texts, please call us to assist you in determining what is real and could be a scammer. Please do not give your Social Security Number, Date of Birth, or any bank account information.



## Public Works Welcomes New Staff Member



*Manahuu! My name is Lauren LaFrombois. I am the new Administrative Assistant for the Public Works Department.*

*I am the daughter of Bill Mallory and Tracy Chiatovich, mother to Hailey Rayne and wife to Ryan LaFrombois.*

*I am a Bishop Paiute Tribal member and was born and raised here in Bishop. I am very excited to be working with such a great team, and I know there is a lot to learn from them.*

*I bring a lot of knowledge and experience into my new position and I look forward to helping the community the best I can.*



# Family Formation Project - News

Submitted by Katrina Martinez – Family Formation Project Director



Family Formation Project collaborated with Bishop Indian Education Center, Wanaaha Casino, Tuniwanobi, and Social Services, to put on a Backyard Family BBQ for our community to kick off the summer. We had a delicious BBQ style lunch with cheeseburgers, hotdogs and all the tasty salads to go with it, and we also got to make ice cream in a bag for dessert! The families were able to spend time together playing with water balloons, water slides, volleyballs, and cornhole and, the best part of the event was seeing families being able to spend time together which is our biggest goal! Family Formation Project will be putting on more events like this in the future so please keep a lookout for our upcoming events, such as the Back-to-School Backpack event, where we hand out school supplies to help our youth be prepared for the next school year. We also have the California Indian Day Event coming up soon, as well. We hope to see more families joining us so that we can get to know one another as a community.

Family Formation also put on a Ribbon Bag Craft Workshop in July. The participants were able to complete a reversible bag by measuring and sewing them together. They also learned how to operate a sewing machine and became familiar with the different functions it has.

Family Formation teaches prevention and awareness at every workshop and event we host. In July, we taught on subjects such as Summer and Heat Safety, Diabetes, Heart Health, Family Wellness, and Eating Healthy. Family Formation will be holding many more fun and cultural related workshops in the future. If you would like to attend, please call the Family Formation office @760-873-4473 or come down to the Family Formation office to fill out a prevention application!



*(Photos credit: Katrina Martinez )*





# WATER QUALITY CONTROL PROGRAM

Environmental Management Office

August 2023 - Update



## MANAHUU,

The Water Quality Control Program (WQCP) has continued to monitor the water quality of the surface waters on the reservation. Bacteria levels (Figure 1) during the irrigation season (April - October) have been measured well below the Bishop Paiute Tribe's water quality standard of 126 mpn (most probable number) for the past few weeks. This is due to the high discharge levels in Bishop Creek that have, in a sense, diluted the usual tailwater that enters the creek. Discharge levels (Figure 2) peaked above 650 cfs (cubic feet per second) on July 22, 2023 and discharging a total average of 618 cfs for the same day. Discharge levels on Bishop Creek are expected to sustain 500-600 cfs for the next couple of weeks as night time temperatures are no longer dipping below freezing, meaning that snow melt in the high country is occurring 24/7. With the higher than normal

discharge, we anticipate bacteria levels to stay low for next few weeks. Notice the inverse relationship of bacteria levels to discharge in Figures 1 and 2 - as discharge increases, bacteria levels decrease and vice versa. The WQCP will continue to monitor the surface waters on the reservation and inform the community of any changes. Daily and weekly updates of these graphs are available on the Water Quality page on the EMO website.

[www.bishoptribeemo.com](http://www.bishoptribeemo.com)

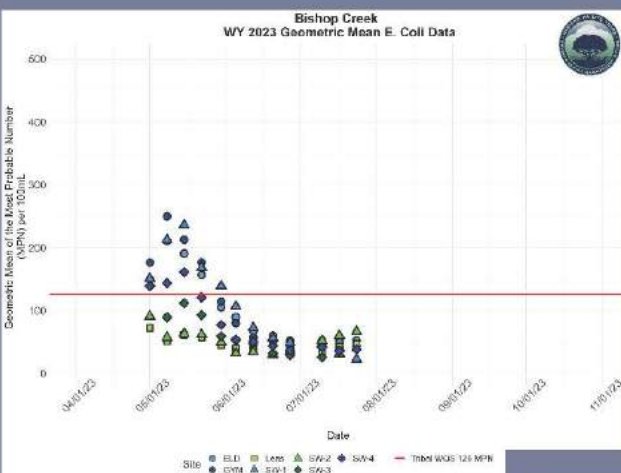
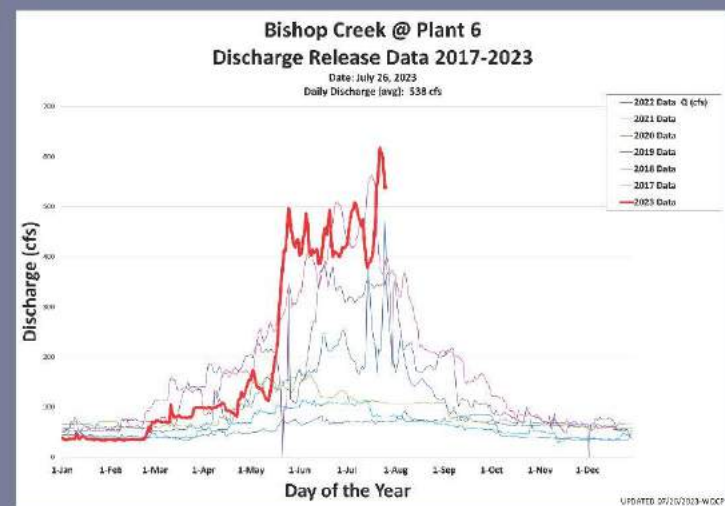


Figure 1: Shows the bacteria levels (E coli) for the Irrigation season (April to October). Notice the decrease in E coli levels since the start of June.

Figure 2: Shows the discharge levels measured at SCE's Plant 6. Notice the higher July peak compared to 2017, the last wettest year on record. >>>>



UPDATED: 2023/07/26 WQCP



## New Team Members!

The Water Quality Control Program onboarded two new members in the month of June and July! Welcome **Jared Hess - Water Quality Technician** and **DeVaun Mitchell - Water Program Summer Intern**. Jared will be assisting the WQCP staff with nonpoint source pollution mitigation in the creeks, managing and maintaining the native plant gardens, among other stuff. DeVaun is our On-the-Job Tribal Youth Summer Intern - he has been assisting the WQCP staff with water quality monitoring, equipment maintenance, seed collecting and other projects in EMO.



Figure 3: The WQCP with the help of other EMO and BLM staff installed and repaired 80+ feet of cattle exclusionary fencing to mitigate nonpoint source pollution on the Reservation. Jared and Natural Resources Intern, Chaaden, installing T-Posts for the fencing project.

### Other Projects:



Figure 4: DeVaun and BLM staff digging a hole for a new fencing brace.

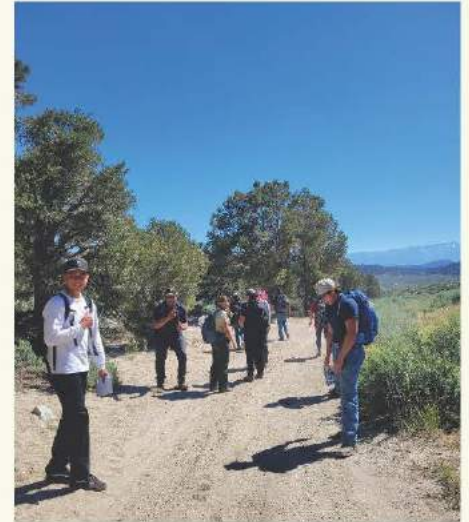


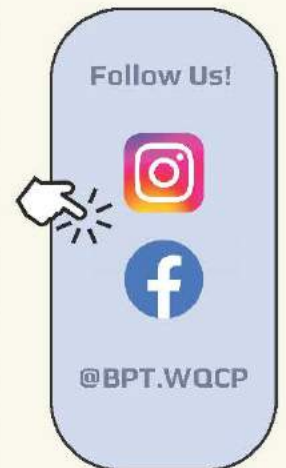
Figure 5: EMO staff joined the NFS and Paiute Elder Raymond Andrews on an archeological monitoring trip in the Sierra Nevada.



Figure 6: The Water Quality Program Coordinator (WQC) joined the Cultural Center and the Education Center on a watershed fieldtrip to the Mono Basin. The WQC conducted a hands-on-activity with the Tribal Youth teaching them about pH and salinity of Mono Lake and causes of levels. Tribal Youth collected data and came up with their own conclusion for the high pH and salinity in Mono Lake.



Figure 7: WQCP staff have continued to monitor the spring runoff (now Summer runoff) and cleared debris when deemed necessary and safe.



If you have any questions about these figures or this article, please feel free to contact the Water Quality Program Coordinator at [brianda.hernandez@bishoppaiute.org](mailto:brianda.hernandez@bishoppaiute.org) or at 760-873-3584 ext. 2120





# From the AIR PROGRAM

## Air Quality - Spring & Summer Activities

Some of the highlights of the spring and early summer season's activity for the Air Program took place up on the air station platform, at the Tribal HQ. The air conditioner that regulates the PM10 continuous monitor shelter needed replacing, and Natural Resources staff provided the critical help to get the new unit installed up on the roof. With the new unit connected, sealed, and fully loaded with coolant and a brand new wire filter, the set up is running very efficiently.

Shortly afterwards, Big Pine Paiute Tribe staff and summer interns swapped visits with the Air Program to do routine checks and service to some of the equipment. At Bishop, we performed a check of the PM2.5 continuous monitor's flows and calibration status, and calibration check of the electronic rain gauge. At Big Pine, we did checks on various sensors (wind, temperature, etc.) on the weather station tower.



The Air Program had a booth at the CDD Housing Fair, where DIY and commercial indoor air filters were displayed, and burn permits sign ups and radon sample kits and humidity meters were provided as available to interested residents. Thank you to Great Basin Unified Air Pollution Control District staff for contributing the box fan filter.

Other recent activities included assisting with flood preparations with a short round each of sandbags and distributing information to residents, and getting our PM10 and PM2.5 flowmeter's annual factory calibration.



Photos, clockwise: EMO staff installs an air conditioner on the PM10 monitor shelter; BPPT staff inspect a sensor; lowering the weather tower at BPPT; rain gauge calibration at BPT air station with BPPT staff; EMO Water Quality Technician, changing the filter during the semiannual service on the PM2.5 monitor; Air Program table at the Housing Fair.



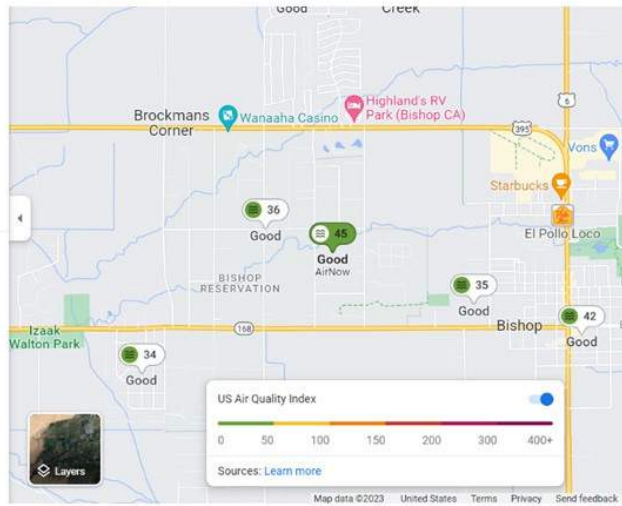
**Good · 45 AQI**  
 Bishop Paiute Tribe-CA  
 Updated 1 hour ago  
 Source: AirNow

[About air quality info](#)

Air quality is satisfactory, and air pollution poses little or no risk.

**Nearby air quality**

- PA-II 95961  
Good  
PurpleAir  
36 AQI
- PA-II 95961  
Good  
PurpleAir  
36 AQI
- PA-II 151604  
Good  
PurpleAir  
35 AQI



## Air Quality in Google Maps

In June 2023, Google released a feature which displays sources of air quality data in Google Maps. Users select this by clicking on the square for "Layers", then "more". The Air Quality square icon is in the first section displayed under "map details".

# Natural Resource Department



*With the High heat during July vegetation is starting to dry up. This allows the dry vegetation to be a fire Hazard.*

*The Bishop Paiute Environmental Department wants to remind community members with high vegetation, to work on managing the fire fuel on their assignments.*



## TUHIDDA NA KOINUI-TI Program

The Bishop Paiute Tribe would like to announce the drawing results for the Authorized Members. We wish them all good luck this season .



	Applicant Name	Type
1	John Andreas	Authorized Member
2	Lynn Villa	Authorized Member
3	William Falck	Authorized Member
4	Rosenda Dondero	Authorized Member
5	Reese Dondero	Authorized Member
6	Leroy Charlie	Authorized Member
7	Donald Andreas	Authorized Member
8	Elbert Montoya III	Authorized Member
9	Cal Omohundro	Authorized Member
10	Byron Gustie Sr.	Authorized Member
11	Thomas Gustie	Authorized Member
12	Tara Rossi	Authorized Member
13	Byron Gustie Jr.	Alternate Authorized Member
14	Bob Carter	Alternate Authorized Member
15	Ethan Williams	Alternate Authorized Member
16	Tyler Andreas	Alternate Authorized Member
17	Kara Keller	Alternate Authorized Member

# OWENS VALLEY PAIUTE SHOSHONE CULTURAL CENTER

2300 West Line Street, Bishop, CA 93514 | 760-873-8844

**HOURS OF OPERATION: SUMMER HOURS**

Tuesday - Friday, 10am - 6pm | Saturday & Sunday, 10am - 3pm | Monday, Closed



## SETH TSOSIE, LOCAL TRIBAL ARTIST "WOWS" MUSEUM GUESTS IN JULY



In May 2023, we started inviting local tribal artists to demonstrate their skills, present samples of their own original artwork, and share their knowledge with all our museum visitors.

For the month of July, we were excited to welcome Seth Tsosie from the Lone Pine Paiute Tribe on Saturday & Sunday, July 8th & 9th. He is a self-taught artist and has learned to specialize in multiple mediums, such as, pottery, flintknapping, and working with beads and fiber. On Saturday, he demonstrated traditional net weaving and cordage using dogbane while displaying his craft items using this local native plant. On Sunday, he demonstrated clay pottery and brought his own hand-made clay pots and figurines to display. We want to give a heartfelt thank you to Seth for "wowing" our guests with his artistic skills. Also we would like to give a "shout out" to our past cultural demonstrators this summer: Charlene Redner, Beaded Medallions; Troy Watterson, Handgame Sets; Melanie Smokey, Willow Work; Rena Brown, Beaded Collars; Allen Mike, Brain Tanned Moccasins.

## SEEKING NATIVE ARTISTS AND DEMONSTRATORS FOR AUGUST 2023



The Cultural Center is able extend weekend demonstrations at the museum into the month of August. If you are interested in being a demonstrator, open dates include August 12/13; August 19/20; and August 26/27.

The focus of this programming is to showcase the cultural heritage of the Paiute and Shoshone people and offer support to our local native artists with a dedicated space to work on their craft while educating museum patrons.

For more details, please reach out to the Cultural Center at 760-873-8844.

This effort is made possible through the donations of Flash Foxy and the March 2023 Climbing Festival.



## SOMETHING OF INTEREST FOR OUR NATIVE VETERANS Native Veterans Honor Flight

The Fort Tejon Tribe has been working with Honor Flight Kern County for a dedicated trip just for Native American veterans of all branches and all times of service, trip is planned for November 2023. The organizers have extended the invite to the Native veterans in this area.

For additional information, please call 661-527-3VET (3838) or visit our website [www.honorflightkerncounty.org](http://www.honorflightkerncounty.org)

## AUGUST HAPPENINGS

August 15, Tuesday

Commodity Distribution Day

8 am - 12 pm

August 25, Friday

WALKING IN BEAUTY

ART SHOW

OPENING EXHIBIT

5 pm - 8 pm

August 27, Sunday

Monthly Native Veteran

Meeting

10 am - 11 am

## SAVE THE DATE!

September

Tüba Nüga - Pinenut Dance

## MILITARY OBSERVANCES



August 4, Friday

United States

Coast Guard

Birthday



August 7, Monday

Purple Heart

Recognition Day



August 14, Monday

Navajo Code

Talkers Day

FOR INFORMATION ON CURRENT & UPCOMING ACTIVITIES, FOLLOW US ON:



# OWENS VALLEY PAIUTE SHOSHONE CULTURAL CENTER

## MONTHLY NATIVE VETERAN MEETING

SUNDAY - AUGUST 27, 10am-11am @ the Cultural Center

Coffee and Donuts - A time to catch up with each other and share upcoming activities and events for our local veterans.



## CULTURAL CENTER FFP SUMMER YOUTH WORKERS



Manahuu i-na-nia-na-ii Broady Banning Bengochia Bishop-wae Nuu kima-du. I am the son of Lavina Bengochia Banning and John Banning. I have 4 sisters and 3 brothers. I am a sophomore in high school. I enjoy playing basketball, riding dirt bikes and my quad and I also enjoy roping my cattle. This is my first year with the youth program.

Hello, my name is Demetria Chavez. I'm 19. I'm a summer youth worker. I work with THPO department, but I'm also helping at the Cultural Center. I graduated from Sherman Indian High School with a 3.5. My Sherman Grandma and Sherman Uncle taught me that our culture is slowly fading, but the younger/young adults are the ones responsible for keeping our tradition alive because if we don't, what will become of our future and of our culture? I love to play basketball and softball, crafting and creating art such as digital labels, making fliers, sewing, crocheting, or even just simple pencil drawing, color draw, and digital art... I would like to be a artist one way or another.



## SAVE THE DATE

FRIDAY  
AUGUST 25, 2023  
5:00 PM - 9:00 PM



COME SHARE IN THE  
OPENING EVENING OF  
PAYAHUNADUU  
PRAYERFUL ACTIONS

## WALKING IN BEAUTY ART EXHIBIT

WAY OF THE SACRED MOUNTAIN  
HONORING THE  
WATER, WOMEN & CHILDREN



OWENS VALLEY  
PAIUTE - SHOSHONE  
CULTURAL CENTER



3 days in the Community.... Come out for a Beautiful Weekend in Payahunaduu. Honoring our Water, Women and Children. All are Welcome to Join.

### FRIDAY - AUGUST 25

@ the Owens Valley Paiute Shoshone Cultural Center, 5pm-9pm

- Opening Evening of Culture & Art
- Greet Prayer Runners
- 215+ Remembrance Mountain Prayer Run

### SATURDAY - AUGUST 26

- Sunrise Water Ceremony @ Tumanguya Falls
- Dedication Community Prayer Hike - Honoring Harry Williams & Water Protectors @ Whitney Portal to Lone Pine Lake
- MMIW Red Tipi Healing Ceremony - Say Her Name Prayer Circle @ First Water Lone Pine Lake (Calling in Sacred Pole Carriers for 6.5 out n back hike)
- Community Meal Gathering - Greet the Hikers @ Whitney Portal Fish Pond Picnic Area, 4pm
- Movie Night - Manzanar Diverted: When Water Turns to Dust Location & Time TBA

### SUNDAY - AUGUST 27

- For the Sake of the Children - Speakers, Prayer Gathering @ Manzanar Consoling Tower, 9am-11am
- We Are Still Here - March on Main in Lone Pine, 1pm
- Closing Gathering and Shared Meal - Location TBD

Community accommodations: Lone Pine Tribal Gymnasium. BYO sleeping bags. More Details To Come.



# Taatsawano 2023

## RECAP - JUNE 3RD & 4TH



We would like to give a big thank you to the collaborators who supported this year event: Cultural Center, OVDC Language Program, Bishop Indian Education Center, Bishop Tribal Youth Council, Wanaaha Casino, Youth with a Mission, and the Bishop Family Formation Project. A shout to the activity/tournament coordinators - Bryon Gustie, Margaret Cortez, & Darren Delgado, MCs Tony Brown & Issac Reno, Cultural Workshop Instructors - Tania Spoonhunter, Marti Hunter, and Charlene Redner, local Cultural Dance Group, Veteran Honor Guard, Craft and Food Vendors, and Community participants...Your support, participation and contributions made the weekend another successful Taatsawano weekend! We are looking forward to the next one!



# OWENS VALLEY PAIUTE SHOSHONE CULTURAL CENTER

## TAATSAWANO WINNERS

### MAIN HAND GAME TOURNAMENT

1st Place; Nicole Lomaintewa, Sam Lawhon, Randy & Talavai  
2nd Place; Pat Nelson, Glenn Nelson, Anthony Brown, & George Brown  
3rd Place; Brian Poncho, Jodi Poncho, Frank Poncho

### YOUTH HAND GAME TOURNAMENT

1st Place; Missy Williams, Levi William, & Jaidyn Mckellips  
2nd Place; Derek, Randy Garcia, & Cameron Picard

### BONE HOG HAND GAME TOURNAMENT

1st Place; Shez Millers & Marjorie Green  
2nd Place; Amber Kinney & Thomas Stone  
3rd Place; June August & Troy Watterson

### CHUPTUHII TOURNAMENT

1st Place (Table #1); Gwen Turner  
1st Place (Table #2); Sanford Joseph

### HORSESHOE TOURNAMENT

1st Place; David Doll

CONGRATULATIONS TO THE TOURNAMENT WINNERS, WE HOPE TO SEE YOU NEXT YEAR!

FYI  
TAATSAWANO  
T-SHIRTS FOR SALE!



## CC Outreach Program - July Monthly Recap

THE CULTURAL CENTER'S OUTREACH OFFICE HAS HAD A FULL MONTH OF SPECIAL OUTREACH EVENTS AND ACTIVITIES

### Nature, Connectivity & Credit

The Cultural Center has been increasing their public outreach. In July we took part in the Friends of the Inyo - Latino Conservation Week kick off event, held at the Alta One Federal credit union on July 15th.

Our booth consisted of general information to help connect the latino community with the Paiute/ Shoshone cultural lifeway, photo collage boards, free CC promo items, a hands-on activity/game, and raffle. This effort also allowed us to begin translating some of our PR information into the Spanish language, with help from Louis Medina from Friend of the Inyo, Thanks Louis for all your support.



### UAIL Visit - Robert Sundance Summer Camp:



We would like to thank United American Indian Involvement, Inc (UAIL) from Los Angeles for coming to visit the Cultural Center. On July 19, the 75 native youth and adults learned about our Paiute cultural and history through touring the Cultural Center with a scavenger hunt with the exhibits, saibū work, and Paiute language in regards to our local plants and animals.

# OWENS VALLEY PAIUTE SHOSHONE CULTURAL CENTER

## CULTURAL ACTIVITIES:

In July, the CC Outreach Program worked with the youth at the Bishop Indian Education Center during their summer enrichment program. The students completed two (2) cultural activities in connection to the Nuumu (Paiute People). These activities consisted of hands-on learning, cultural education through language and history, curiosity, and creativity.

A reminder, the CC Outreach Program is a new office at the Cultural Center. The goal is to expand cultural knowledge and provide outlets for our tribal community to teach, learn and share our lifeways. All the outreach projects we have done thus far for 2023 will be on exhibit at this year's Tri County Fair August 31- Sept 3 - Stop by the exhibit hall and check it out.

### Saibü (Tule) Teaching:



All classes at the Ed. Center had the opportunity to make a saibü mat. Fun facts about Saibü; it is harvested in taatswawano (summer) when the tops have flowered, some examples of how we used was to make mats, duck decoys, and Toni Nobi; its also a natural water filter which is important for our water resources! We would like to thank Joseph Sepsey, Charlene Redner, & Rena Brown for teaching our staff some of these lessons! With the knowledge learned the CC Outreach Program is able to introduce and expand on the plant, its importance to the land and people, its usage, & harvesting with more confidence.

### Piaga & Monotsibi (Pandora Caterpillar & Pandora Moth) Teaching:



The students placed their Piaga on a Jeffery Pine Tree trunk, and their Monotsibi in the Jeffery Pine Tree canopy!



All classes at the Ed. Center had the opportunity to make a paper Piaga or Monotsibi. Fun facts about Piaga: they are a natural food resource, grows on Jeffery Pine Trees, harvested in late spring, and cooked in hot sand. Fun facts about Monotsibi: they are the largest insect in North American, males have feather like antennae and females have narrow threadlike antennae, and their wing span ranges from 3 to 5 inches, and they live to be 5 years old. We would like to thank the Environmental Management Office for the information about the Piaga and explaining the Indiana Summit RNA Project. With the information provided the CC Outreach Program is able to share and expand on this knowledge, along with its importance to the land and people.




# OWENS VALLEY PAIUTE SHOSHONE CULTURAL CENTER

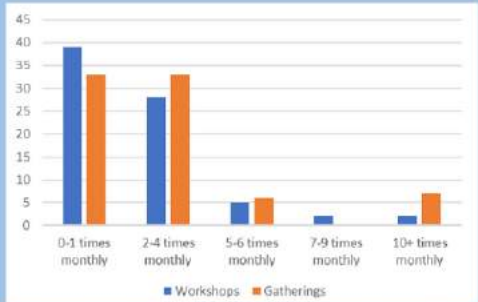


## IMLS Grant Updates

### PUBLIC SURVEY RESULTS

**The Cultural Center conducted this survey from April - June to receive constructive criticism on ways to improve, promote and protect our culture & traditional lifeways for our community. We would like to thank everyone who took the time to complete this survey, your feedback is greatly appreciated!**

- Total of 76 survey participants. 62 participants from Bishop CA, 12 from Big Pine CA, 2 out of the area. Tribal affiliation included 54-Bishop Paiute, 7-Big Pine Paiute, 1-Turtle Mt. Band Chippewa, 1-Navajo, 1-Northern Arapaho, 1-Colville, 1-Timbisha Shoshone, and 10-no tribal affiliation.
- Survey included questions on Traditional lifeways vs. Culture, What do these terms mean to you? Responses included the following... Traditional lifeways: Learning from our elders, practice cultural tradition in forms of hunting, gathering, hiking, fishing, ceremonies, storytelling, language, plants, and dancing. Culture: Protecting customs, cultural skills, values, and traditions for our tribal future. It ties us to our environment and grounds our foundation to our given traditional lifeways.
- In the survey we presented the question of where do you feel these traditional lifeways and culture are being taught and protected? Responses included the following... Cultural Center, OV CDC - Language, Head start, OV CDC - TANF, OV CDC - Tuniwa Nobi, Local Elders, Environment Management Office, At Home w/ family, and Bishop Indian Education Center.
- We presented the question of how often during the month do individuals participate in cultural gatherings/events and workshops. The responses are represented in the chart to the right... 
- We asked if the information given at the gathering and workshops are culturally relevant... Participants responded with 73 - YES and 3 - NO.
- We asked how can the Cultural Center improve our events, gatherings, classes, workshop, and lectures? Responses included... Have more activities for every age and advertise in advance. Hold the activities in a larger space and have a virtual option for community members. To provide the materials for hands on learning for each participant along with, food, and incentives.
- We asked for suggestions on other collaborators for the cultural center, possible organizations we should partner with. Responses included the following... Social Services, Inyo Council Arts, Neighboring Tribes, local demonstrators, local schools, all local agencies, Elders, Inyo County Offices, and Eastside Student Center.
- We requested suggestions on other activities community would like to see at Cultural Center. Responses included the following... Invite other tribes to do presentations, plant education, hands on activities, dance classes, regalia making, hunting and gathering education, basketry, beading classes, more community gatherings, song classes, and talking circles.



**Again thank you to all the for participants who took time to submit. This will help us in the 2023/24 year. We will be running another survey in 2024 as a second part for this grant.**

### IMLS Grant - Field Trip #1 to Mono Lake

One of the project goals within the grant is to create curriculum kits for the Eastern Sierra watersheds. Over the past few months we have been teaming up with various tribal depts. and local programs to begin this process. In July, we had our first trip to Mono Lake. We would like to give a big thank you our partners the Bishop Indian Education Center, Bishop EMO - water quality program, OVIWC, and Mono lake Tribe for their support and knowledge both in the classroom and on the field trip. As we are looking forward to our next three (3) field trip through the Owens Valley in 2023/24.



# OWENS VALLEY PAIUTE SHOSHONE CULTURAL CENTER

THE OVPSCC GIFTSHOP IS NOW OFFERING

# LayAway

STARTING AUGUST 1ST  
THROUGH DECEMBER  
30TH 2023

## Basic Guidelines-

- Layaway contracts will offered to place cultural center giftshop items on a payment plan.
- **Contracts are available for INSTORE PURCHASES ONLY.**
- **All layaway contracts are to be completed by December 30, 2023, paid in full.**
- Contracts are available for purchases of \$75 or more. Excluding- beading supplies and small miscellaneous items.
- There is a required down payment, minimum of 20% of the total balance + service fee.
- Limit of One (1) open layaway contract per person. Must close out previous contract in order to start a new layaway plan.
- A non refundable service fee of \$5.00 will be applied to all layaway contracts.
- Payments can be made in person at the Cultural Center by cash or credit card.

## Cancellation of a Layaway Contract-

- A layaway contract may be canceled at any time.
- If a layaway contract is canceled, \$15.00 of the contract will be kept as a cancellation fee.
- If a contract is canceled, a refund of any payments made to date will be repaid, minus the service fee and cancellation fee, a total amount of \$20.00.
- All layaway contracts are to be completed by Dec. 30, 2023, paid in full. If any contracts are not completed by this date, the plan will be canceled, all items will be returned to stock, and the cancellation fee and service fee will be deducted, the remaining balance of the plan will be refunded to the main contract holder and closed out.

Please Note this is a starting point and may be adjusted after the 2023 year.

**FOR MORE INFORMATION PLEASE CALL 760-873-8844**



## 2023 UPCOMING VENDOR OPPORTUNITIES

### BUYING DAYS

JULY- 7/11 & 7/12  
10AM-6PM

**\*\*NOTE CHANGE**

**THE AUGUST BUYING  
DAYS ARE CANCELLED**  
OCTOBER- 10/17 & 10/18  
10AM-6PM  
NOVEMBER- 11/14 & 11/15  
10AM-6PM

### MARKETS/SALES

- **OCTOBER**  
BIZARRE BAZAAR - 10/21
- **NOVEMBER**  
YU UWANO - 11/4 & 11/5
- **DECEMBER**  
POP UP SHOPS - 12/1,  
12/8, & 12/22  
HOLIDAY MARKET-  
12/16 & 12/17



**Cultural  
Center  
Raffle  
extended**

Drawing will be held  
Wednesday August 30th  
@ the Cultural Center



## JOB OPENINGS - BISHOP PAIUTE TRIBE



- Tribal Police Officer
- Head Start Education Manager
- Lead Cook Elders Program
- Food Sovereignty Program Coordinator
- BIHS Assistant Cook
- Accounts Payable Specialist
- Hazardous Fuels Reduction Foreman
- Victims of Crime Outreach Coordinator
- BIHS Substitute Teacher
- BIHS Substitute Teachers Aide
- Deli Manager
- BIEC Tutor I/II

*\*Jobs as of August 1, 2023 and current openings subject to change\**  
 For the most current job opportunities visit the Tribe's website at  
[www.bishoppaiutetribe.com](http://www.bishoppaiutetribe.com) or contact Human Resources

*"BPT has a mandatory COVID-19 vaccination policy. Prospective employees requesting a Provisional Exemption must receive their first vaccination dose within (10) ten calendar days of their employment start date"*

*Visit [www.bishoppaiutetribe.com](http://www.bishoppaiutetribe.com) to download an employment application and job description or pick up at the Bishop Tribal Office at 50 N. Tu Su Lane, Bishop, CA. Any further questions, call Human Resources at (760) 784-9692.*

## JOB OPENINGS - WANAAHA CASINO



- Cocktail Server
- Count/Drop Team Member (Part-Time)
- EVS Attendant
- Facility Technician
- Guest Services(Cage Cashier) (Part-Time)
- IT Technician
- Lead Cashier
- Line Cook
- Prep Cook \*18 years of age or older
- Security Officer
- Server (Part-time) \*18 years of age or older
- Slot Attendant
- Slot Technician
- Vault Attendant



***\*Must be 21 years of age to work in the Casino unless stated otherwise & comply with Wanaaha Casino's COVID-19 Vaccination policy***

*To apply for a position with the Wanaaha Casino, you may apply in person at the HR Department during regular business hours M-F / 8 a.m. – 5 p.m.; or you may call (760) 873-4150 ext. 215, 206 or 243. For more information on the listed positions and/or to apply online, please visit [www.wanaaha.com](http://www.wanaaha.com)*

TRIBAL EMPLOYMENT RIGHTS OFFICE

# MICROSOFT COMPUTER WORKSHOPS

## MS EXCEL

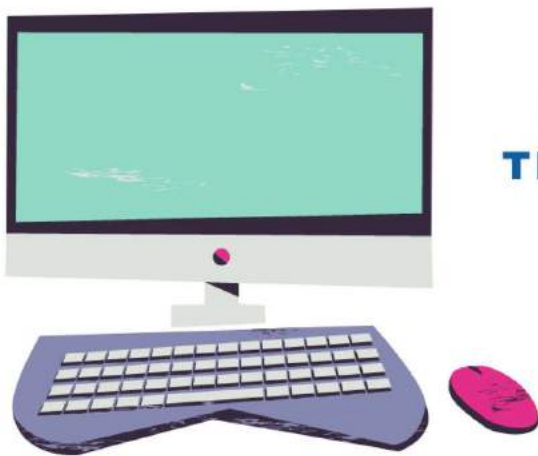
### SEPT. 13, 2023

9:00 AM - 1:00 PM

## MS WORD

### SEPT. 14, 2023

9:00 AM - 1:00 PM



LOCATED AT  
50 TUSU LANE  
TRIBAL CHAMBERS

IF INTERESTED, REGISTER WITH THE TERO  
OFFICE LOCATED AT 50 TU SU LANE OR  
CONTACT SUSIE WEST AT 760-873-7893.

DEADLINE TO REGISTER:  
**SEPTEMBER 8, 2023**



FREE  
WORKSHOPS

TRIBAL EMPLOYMENT RIGHTS OFFICE

# CARPENTRY TRAINING

**SEPTEMBER 18 - 22, 2023**

**8:00 AM TO 5:00 PM**

**TRIBAL MAINTENANCE FACILITY 50 TU SU LANE, BISHOP**

(Located on south side of Tribal Office building)

**IF INTERESTED,  
REGISTER WITH THE  
TERO OFFICE LOCATED  
AT 50 TU SU LANE OR  
CONTACT SUSIE WEST  
AT 760-873-7893.**

**DEADLINE TO REGISTER:  
SEPTEMBER 8, 2023**

**Cost \$350 Per Person**

(Limited number of scholarships  
may be available for Bishop Tribal Members,  
must submit for approval)



# BISHOP TRIBAL ELDERS TITLE VI NUTRITION PROGRAM

## AUGUST 2023 - 11:30 AM - 1:00 PM



SUN	MON	TUE	WED	THU	FRI	SAT
6	7	8	9	10	11	12
<p><b>MENU APPROVED BY DIETICIAN SHANNON BEASLEY, RD, MPH, CDCES</b></p> <p>CHEF SALAD WITH DRESSING WHEAT ROLL MANGO'S</p>	<p>CHICKEN BURRITO BEANS &amp; SALSA PINEAPPLE</p> <p>HAMBURGER WITH FIXINS CHIPS &amp; BANANA</p>	<p>CHICKEN BURRITO BEANS &amp; SALSA PINEAPPLE</p> <p>HAMBURGER WITH FIXINS CHIPS &amp; BANANA</p>	<p>ELDERLY SUMMER WELLNESS GATHERING</p>	<p>PAIUTE BEANS COLESLAW PAN BREAD MANDARIN ORANGES</p>	<p>BAKED FISH SANDWICH SWEET POTATO FRIES ORANGES</p>	<p>ALL MEALS SERVED WITH MILK</p>
13	14	15	16	17	18	19
<p>LASAGNA GARLIC BREAD GARDEN SALAD MANDARIN ORANGES</p>	<p>CHILI BEANS CORN BREAD CARROT SALAD PEACHES</p>	<p>GRILLED CHICKEN WILD RICE PILAF BRUSSEL SPROUTS MIXED BERRIES</p>	<p>BLACKENED SALMON BROWN RICE BRUSSEL SPROUTS FRUIT CUP</p>	<p>PORK CHOP PASTA GREEN BEANS NECTARINES</p>		
20	21	22	23	24	25	26
<p>BEEF &amp; BROCCOLI BROWN RICE CANTALOUPE</p>	<p>NAVY BEAN SOUP, CORNBREAD CUCUMBER SALAD APRICOTS</p>	<p>CHICKEN ENCHILADAS BEANS WATER MELON</p>	<p>SPAGHETTI BREAD STICKS GARDEN SALAD STRAWBERRIES</p>	<p>CLAM CHOWDER OYSTER CRACKERS ASIAN SALAD &amp; ORANGES</p>		
27	28	29	30	31		
<p>HOT TURKEY SANDWICH GARDEN SALAD PEACHES</p>	<p>VEGETABLE SOUP PAN BREAD BEET SALAD &amp; PEAR</p>	<p>VEGETABLE SOUP PAN BREAD BEET SALAD &amp; PEAR</p>	<p>HAM &amp; CHEESE SANDWICH MUSHROOM SOUP BROCCOLI SALAD</p>	<p>SHEPARD'S PIE GLAZED CARROTS COLESLAW FRUIT COCKTAIL</p>		



# AUGUST 2023

SUN	MON	TUE	WED	THU	FRI	SAT
ALL ACTIVITIES ARE HELD AT THE ELDERS BUILDING UNLESS OTHERWISE NOTED	1	2	3	4	5	
6	7	8	9	10	11	12
		10:00 A.M. STRETCH & TONE CLASS	2:00 P.M. PAIUTE LANGUAGE CLASS	ELDERS SUMMER WELLNESS GATHERING	1:00 P.M. TALLY FARM BOXES	
13	14	15	16	17	18	19
	1:00 P.M. REZ READERS	10:00 A.M. STRETCH & TONE CLASS			1:00 P.M. BINGO (10 GAMES) \$10.00 BUY-IN	
20	21	22	23	24	25	26
	10:00 A.M. COOKING CLASS WITH ROSEANNE	10:00 A.M. STRETCH & TONE CLASS	2:00 P.M. PAIUTE LANGUAGE CLASSES	1:00 P.M. CHUPTUHEE	2:00 P.M. TALLY FARM BOXES	
27	28	29	30	31		
	1:00 P.M. CRAFTY CRAFTS WITH CHELSEY	10:00 A.M. STRETCH & TONE CLASS				CLASSES OPEN TO ELDERS

# COMMITTEE/BOARD VACANCIES

## Bishop Paiute Tribe

*Cultural Advisory Committee - Four (4) Vacancies*

*Education Parent Advisory Committee (PAC) - Four (4) Vacancies*

*Tribal Court Advisory Committee - Three (3) Vacancies*

*THPO Committee - Three (3) Vacancies*

*TEI Nuumu Takawa-Du "Wellness Committee" - Three (3) Vacancies*

*Owens Valley Career Development Center Tribal Advisory Committee  
Representative (TAC) - One (1) Vacancy*

*Constitution Committee - One (1) Vacancy*

*Food Sovereignty Program Advisory Board - One (1) Vacancy*

*Pow Wow Committee - One (1) Vacancy*

*Gaming Commission - One (1) Vacancy*

***Requirements to serve on Committees & Boards:***

***-Must be a Bishop Tribal Member-***

***-Must submit a "Letter of Intent" to the Tribal Office-***

***-Can reside outside of Bishop-***





# BISHOP PAIUTE TRIBAL COUNCIL



**CHAIRWOMAN**

**Meryl Picard**

***meryl.picard@bishoppaiute.org***  
**(760) 920-9977**



**VICE-CHAIRMAN**

**Jeff Romero**

***jeff.romero@bishoppaiute.org***  
**(760) 920-3706**



**SECRETARY/TREASURER**

**Steven Orihuela**

***steven.oriuela@bishoppaiute.org***  
**(760) 920-2967**



**COUNCIL MEMBER**

**Joyce White**

***joyce.white@bishoppaiute.org***  
**(760) 784-4720**



**COUNCIL MEMBER**

**Mitchell David**

***mitchell.david@bishoppaiute.org***  
**(760) 920-5622**

## ***Tribal Administration Department - Contact Information***

***760-873-3584 (dial desired extension)***

**Chief Executive  
Officer**

***Gloriana M. Bailey MBA***

***gloriana.bailey***  
***@bishoppaiute.org***  
**ext. 1300**

**Chief Operations  
Officer I**  
**Brian Poncho**

***brian.poncho***  
***@bishoppaiute.org***  
**ext. 1350**

**Chief Operations  
Officer II**  
**Kody Jaeger**

***kody.jaeger***  
***@bishoppaiute.org***  
**ext. 1340**

**Tribal Council  
Secretary**  
**Charlene Keller**

***charlene.keller***  
***@bishoppaiute.org***  
**ext. 1200**

**Administrative  
Assistant**  
**Jordan Andreas**

***jordan.andreas***  
***@bishoppaiute.org***  
**ext. 1310**

**Public Relations  
Specialist**  
**Deston Rogers**

***deston.rogers***  
***@bishoppaiute.org***  
**ext. 1330**

**Receptionist**  
**Teresa Allen**

***teresa.allen***  
***@bishoppaiute.org***



# 2022 Annual Water Quality Report



Bishop Paiute Tribe:  
Public Works Department



## Bishop Paiute-Shoshone Tribe Annual Water Quality Report

Public Water System #090600122

2022

This report is a snapshot of your water quality. Included are details about where your water comes from, what it contains, and how it compares to standards set by regulatory agencies. We are committed to providing you with information because informed customers are our best allies.

### Do I need to take special precautions?

Some people may be more vulnerable to contaminants in drinking water than the general population. Immuno-compromised persons such as persons with cancer undergoing chemotherapy, persons who have undergone organ transplants, people with HIV/AIDS or other immune system disorders, some elderly, and infants can be particularly at risk from infections. These people should seek advice about drinking water from their health care providers. The Environmental Protection Agency (EPA) and Centers for Disease Control (CDC) guidelines on appropriate means to lessen the risk of infection by *Cryptosporidium* and other microbial contaminants are available from the Safe Water Drinking Hotline (800-426-4791).

### Where does my water come from?

Your water comes from 6 ground water sources.

### Why are there contaminants in my drinking water?

Drinking water, including bottled water, may reasonably be expected to contain at least small amounts of some contaminants. The presence of contaminants does not necessarily indicate that water poses a health risk. More information about contaminants and potential health effects can be obtained by calling the Environmental Protection Agency's Safe Drinking Water Hotline (800-426-4791).

The sources of drinking water (both tap water and bottled water) include rivers, lakes, streams, ponds, reservoirs, springs, and wells. As water travels over the surface of the land or through the ground, it dissolves naturally occurring minerals and, in some cases, radioactive material, and can pick up substances resulting from the presence of animals or from human activity including:

microbial contaminants, such as viruses and bacteria, that may come from sewage treatment plants, septic systems, agricultural livestock operations, and wildlife; inorganic contaminants, such as salts and metals, which can be naturally occurring or result from urban stormwater runoff, industrial, or domestic wastewater discharges, oil and gas production, mining, or farming; pesticides and herbicides, which may come from a variety of sources such as agriculture, urban stormwater runoff, and residential uses; organic chemical contaminants, including synthetic and volatile organic chemicals, which are by-products of industrial processes and petroleum production, and can also come from gas stations, urban stormwater runoff, and septic systems; and radioactive contaminants, which can be naturally occurring or be the result of oil and gas production and mining activities.

In order to ensure that tap water is safe to drink, EPA prescribes regulations that limit the amount of certain contaminants in water provided by public water systems. Food and Drug Administration (FDA) regulations establish limits for contaminants in bottled water which must provide the same protection for public health.

# WATER QUALITY TABLE

The table below lists all of the drinking water contaminants detected during the calendar year of this report. The presence of contaminants in the water does not necessarily indicate that the water poses a health risk. Unless otherwise noted, the data presented in this table is from testing done in the calendar year of the report. The EPA or the State requires monitoring for certain contaminants less than once per year because the concentrations of these contaminants do not change frequently.

Contaminants	MRDLG	MRDL	Your Water	Range Low High	Sample Date	MRDL Exceeded	Typical Source
--------------	-------	------	------------	-------------------	-------------	---------------	----------------

## Disinfectants

Chlorine Units: Chlorine residual, ppm	4	4	0.1365	0.02 0.19	2022	No	Drinking water additive used for disinfection
---	---	---	--------	-----------	------	----	---

Contaminants	MCLG	MCL	Your Water	Range Low High	Sample Date	Violation	Typical Source
--------------	------	-----	------------	-------------------	-------------	-----------	----------------

## Disinfection By-Products

Total Trihalomethanes (THMs) Units: ppb	N/A	80	1.7	N/A N/A	2022	No	By-product of drinking water chlorination
--	-----	----	-----	---------	------	----	---

Contaminants	MCLG	MCL	Your Water	Range Low High	Sample Date	Violation	Typical Source
--------------	------	-----	------------	-------------------	-------------	-----------	----------------

## Inorganic Contaminants

Arsenic Units: ppb	0	10	4	ND 4	2019	No	Erosion of natural deposits; runoff from orchards; glass and electronics production wastes
-----------------------	---	----	---	------	------	----	--

Nitrate [reported as Nitrogen] Units: ppm	10	10	0.8	ND 0.8	2022	No	Runoff and leaching from fertilizer use; leaching from septic tanks, sewage; erosion of natural deposits
--	----	----	-----	--------	------	----	--

Sodium Units: ppm	N/A	N/A	14	6 14	2019	No	Erosion of natural deposits; salt water intrusion
----------------------	-----	-----	----	------	------	----	---

Contaminants	MCLG	Action Level	Your Water	Range	Sample Date	A.L. Exceeded	Typical Source
--------------	------	--------------	------------	-------	-------------	---------------	----------------

**Lead and Copper Rule**

Copper Units: ppm - 90th Percentile	1.3	1.3	0.022	0 sites over Action Level	2019	No	Corrosion of household plumbing systems; erosion of natural deposits; leaching from wood preservatives
--	-----	-----	-------	---------------------------	------	----	--

Contaminants	MCLG	MCL	Your Water	Range Low   High	Sample Date	Violation	Typical Source
--------------	------	-----	------------	---------------------	-------------	-----------	----------------

**Radiological Contaminants**

Adjusted Alpha (Excl. Radon & U) Units: pCi/L	0	15	3	ND   3	2019	No	Erosion of natural deposits
--	---	----	---	--------	------	----	-----------------------------

Uranium (combined) Units: ppb	0	30	3	ND   3	2019	No	Erosion of natural deposits
----------------------------------	---	----	---	--------	------	----	-----------------------------

**Special Education Statements**

**Additional Information for Lead**

If present, elevated levels of lead can cause serious health problems, especially for pregnant women and young children. Lead in drinking water is primarily from materials and components associated with service lines and home plumbing. PWS system is responsible for providing high quality drinking water, but cannot control the variety of materials used in plumbing components. When your water has been sitting for several hours, you can minimize the potential for lead exposure by flushing your tap for 30 seconds to 2 minutes before using water for drinking or cooking. If you are concerned about lead in your water, you may wish to have your water tested. Information on lead in drinking water, testing methods, and steps you can take to minimize exposure is available from the Safe Drinking Water Hotline at 1-800-426-4791 or at <http://www.epa.gov/your-drinking-water/basic-information-about-lead-drinking-water>.

## Microbiological Testing

We are required to test your water regularly for signs of microbial contamination. Positive test results could lead to follow-up investigations called assessments and potentially the issuance of public health advisories. Assessments could lead to required corrective actions. The information below summarizes the results of those tests.

Calendar Year	Sampling Requirements	Sampling Conducted (months)	Total E.coli Positive	Assessment Triggers	Assessments Conducted
2022	3 Samples due monthly	11 out of 12	0	0	0

## Health-Based Violations

The table below lists the health-based violations the water system incurred during the last calendar year. While you should have received notification of the violations at an earlier date, we are required to list them in this report.

Contaminant Name	Type of Violation	Begin/End Date	Steps Taken to Correct the Violation	Return to Compliance	Return Action Date	Comment
Revised Total Coliform Rule (RTCR)	Failure to conduct routine monitoring	4/1/2022 - 4/30/2022	Following month reporting of all required results.	Yes	5/24/2022	Subsequent reporting of required results.

## Public Notice for Monitoring/Reporting and Other Violations

We are required to monitor your drinking water for specific contaminants on a regular basis. Results of regular monitoring are an indicator of whether or not our drinking water meets health standards. During the period covered by this report, we did not complete all monitoring or testing for the contaminants listed below, and therefore cannot be sure of the quality of your drinking water during that time. Violations which have not been returned to compliance will be repeated annually. The table below lists the contaminants we did not properly test for or other violations during the report period.

Contaminant Name	Type of Violation	Begin/End Date	Steps Taken to Correct the Violation	Return to Compliance	Return Action Date	Comment
Dibromochloropropane (DBCP)	Major monitoring/reporting violation for routine chemical monitoring.	1/1/2020 - 12/31/2022	Reporting monitoring results as required.			
PCBs [Polychlorinated biphenyls]	Major monitoring/reporting violation for routine chemical monitoring.	1/1/2020 - 12/31/2022	Reporting monitoring results as required.			
Methoxychlor	Major monitoring/reporting violation for routine chemical monitoring.	1/1/2020 - 12/31/2022	Reporting monitoring results as required.			
Lindane	Major monitoring/reporting violation for routine chemical monitoring.	1/1/2020 - 12/31/2022	Reporting monitoring results as required.			
Heptachlor epoxide	Major monitoring/reporting violation for routine chemical monitoring.	1/1/2020 - 12/31/2022	Reporting monitoring results as required.			
Heptachlor	Major monitoring/reporting violation for routine chemical monitoring.	1/1/2020 - 12/31/2022	Reporting monitoring results as required.			
Toxaphene	Major monitoring/reporting violation for routine chemical monitoring.	1/1/2020 - 12/31/2022	Reporting monitoring results as required.			
2,4-D	Major monitoring/reporting violation for routine chemical monitoring.	1/1/2020 - 12/31/2022	Reporting monitoring results as required.			
2,4,5-TP (Silvex)	Major monitoring/reporting violation for routine chemical monitoring.	1/1/2020 - 12/31/2022	Reporting monitoring results as required.			

Contaminant Name	Type of Violation	Begin/End Date	Steps Taken to Correct the Violation	Return to Compliance	Return Action Date	Comment
Chlordane	Major monitoring/reporting violation for routine chemical monitoring.	1/1/2020 - 12/31/2022	Reporting monitoring results as required.			
Carbofuran	Major monitoring/reporting violation for routine chemical monitoring.	1/1/2020 - 12/31/2022	Reporting monitoring results as required.			
Atrazine	Major monitoring/reporting violation for routine chemical monitoring.	1/1/2020 - 12/31/2022	Reporting monitoring results as required.			
Alachlor	Major monitoring/reporting violation for routine chemical monitoring.	1/1/2020 - 12/31/2022	Reporting monitoring results as required.			
Sodium	Major monitoring/reporting violation for routine chemical monitoring.	1/1/2020 - 12/31/2022	Reporting monitoring results as required.			
Chlorine	Failure to submit DBPR results for Stage 1 or 2 Disinfection By-Products Rule	4/1/2022 - 6/30/2022	Submission of subsequent monitoring results.	Yes	5/24/2022	Subsequent reporting of required results.
Ethylene Dibromide	Major monitoring/reporting violation for routine chemical monitoring.	1/1/2020 - 12/31/2022	Reporting monitoring results as required.			
Endothall	Major monitoring/reporting violation for routine chemical monitoring.	1/1/2020 - 12/31/2022	Reporting monitoring results as required.			
Dioxin (2,3,7,8-TCDD)	Major monitoring/reporting violation for routine chemical monitoring.	1/1/2020 - 12/31/2022	Reporting monitoring results as required.			
Simazine	Major monitoring/reporting violation for routine chemical monitoring.	1/1/2020 - 12/31/2022	Reporting monitoring results as required.			
Picloram	Major monitoring/reporting violation for routine chemical monitoring.	1/1/2020 - 12/31/2022	Reporting monitoring results as required.			
Oxamyl [Vydate]	Major monitoring/reporting violation for routine chemical monitoring.	1/1/2020 - 12/31/2022	Reporting monitoring results as required.			
Hexachlorocyclopentadiene	Major monitoring/reporting violation for routine chemical monitoring.	1/1/2020 - 12/31/2022	Reporting monitoring results as required.			
Hexachlorobenzene	Major monitoring/reporting violation for routine chemical monitoring.	1/1/2020 - 12/31/2022	Reporting monitoring results as required.			
Pentachlorophenol	Major monitoring/reporting violation for routine chemical monitoring.	1/1/2020 - 12/31/2022	Reporting monitoring results as required.			
Endrin	Major monitoring/reporting violation for routine chemical monitoring.	1/1/2020 - 12/31/2022	Reporting monitoring results as required.			
Lead and Copper Rule	Failure to submit Followup and Routine Sampling results for Lead and Copper Rule.	1/1/2020 - 12/31/2022	Reporting monitoring results as required.			
Diquat	Major monitoring/reporting violation for routine chemical monitoring.	1/1/2020 - 12/31/2022	Reporting monitoring results as required.			
Dinoseb	Major monitoring/reporting violation for routine chemical monitoring.	1/1/2020 - 12/31/2022	Reporting monitoring results as required.			
Di (2-ethylhexyl) phthalate	Major monitoring/reporting violation for routine chemical monitoring.	1/1/2020 - 12/31/2022	Reporting monitoring results as required.			
Di (2-ethylhexyl) adipate	Major monitoring/reporting violation for routine chemical monitoring.	1/1/2020 - 12/31/2022	Reporting monitoring results as required.			
Dalapon	Major monitoring/reporting violation for routine chemical monitoring.	1/1/2020 - 12/31/2022	Reporting monitoring results as required.			
Benzo(a)pyrene	Major monitoring/reporting violation for routine chemical monitoring.	1/1/2020 - 12/31/2022	Reporting monitoring results as required.			



Contaminant Name	Type of Violation	Begin/End Date	Steps Taken to Correct the Violation	Return to Compliance	Return Action Date	Comment
Glyphosate	Major monitoring/reporting violation for routine chemical monitoring.	1/1/2020 - 12/31/2022	Reporting monitoring results as required.			
<p>What should I do, as a consumer? There is nothing you need to do at this time.</p> <p>What is being done by the utility? We will work with our regulatory official to conduct all required contaminant monitoring as directed.</p>						

## Definitions

<b>Term</b>	<b>Definition</b>
ppm	parts per million, or milligrams per liter (mg/L)
ppb	parts per billion, or microgram per liter (ug/L)
positive samples	the number of positive samples taken that year
% positive samples/month	% of samples taken monthly that were positive
pCi/L	picocuries per liter
ND	Not detected
N/A	Not applicable
MCLG	Maximum Contaminant Level Goal: The level of a contaminant in drinking water below which there is no known or expected risk to health. MCLGs allow for a margin of safety.
MCL	Maximum Contaminant Level: The highest level of a contaminant that is allowed in drinking water. MCLs are set as close to the MCLGs as feasible using the best available treatment technology.
MRDL	Maximum Residual Disinfectant Level
MRDLG	Maximum Residual Disinfectant Level Goal
TT	Treatment Technique: A required process intended to reduce the level of a contaminant in drinking water.
AL	Action Level: The concentration of a contaminant which, if exceeded, trigger treatment or other requirements which a water system must follow.
90th Percentile	Statistical value used to determine if Action Level is exceeded. Determined by calculating the value at which 90% of the samples tested were below that value.

### How can I get involved?

Please feel free to contact the number provided below for more information or for a translated copy of the report if you need it in another language.

\*Please share this information with all the other people who drink this water, especially those who may not have received this notice directly (for example, people in apartments, nursing homes, schools, and businesses). You can do this by posting this notice in a public place or distributing copies by hand or mail.\*

### For more information please contact:

Lauren LaFrombois, Administrative Assistant, 630 Brockman Lane, Bishop, California 93514

**Phone:** (760) 873-6638

**Fax:** (760) 873-3076



# About us



The Public Works Department's primary function and responsibility is to operate and maintain the Bishop Paiute Tribes domestic water distribution system and wastewater mains. The Funding for this program is received through the collection of monthly service fees from the water/sewer users and are established by the Bishop Paiute Tribal Council. The service fees collected pay for the operation and maintenance o the tribe's domestic water and sewer main lines, Eastern Sierra Community Service District wastewater disposal fees, and pumping electrical costs.

## Mission Statement

The Mission of the Public Works Department is to improve and encourage the quality of life for the residents of the Tribal Community though responsive, efficient and effective delivery of services to everyone within the community and by reflecting a can-do attitude with our customers and surrounding communities.

### Hours

**Monday-Friday  
8:00am-5:00pm**

### Office Location

**50 Tu Su Lane  
Bishop, Ca 93514**

### Yard Location

**630 Brockman Lane  
Bishop, Ca 93514**

### Staff

**Sandra Warlie  
Public Works Director  
(760) 873-6638 Ext. 2020**

**Dan Stone  
Water Operator II  
(760) 937-1289**

**Lauren LaFrombois  
Admin. Assistant  
(760) 873-6638 Ext. 2070**



**Return Service Requested**

**Paiute Professional Building  
50 Tu Su Lane  
Bishop, Ca 93514  
760.873.3584 ph  
760.873.4143 fax  
[www.bishoppaiutetribe.com](http://www.bishoppaiutetribe.com)**

**PST. STD. MAIL  
U.S POSTAGE  
PAID  
BISHOP, CA  
PERMIT NO.36**